



Cat 6A Shielded (Alloy) 180° Degree Dual IDC Quick Crimp Keystone Jack

Description

Alantek Cat6A Shielded (Alloy) 180° Degree Dual IDC Quick Crimp Keystone Jack are designed to provide superior performance, reliability and fast termination. Its advanced circuit design and alloy body provide optimum signal quality, allowing it to exceed TIA/EIA and ISO Category 6A performance standards. The slim design offers a smaller footprint maximizing space in confined area.



Application

Suitable for use in 10Base-T to 10GBase-T Ethernet applications. Supports all types of Alantek faceplate and Modular Patch Panels.

Standard

- ANSI/TIA 568C.2 Category 6A
- ISO 11801 Class E Standard
- TIA/EIA TSB-40
- CENELEC EN50173
- UL 1863
- UL94V-0

Features

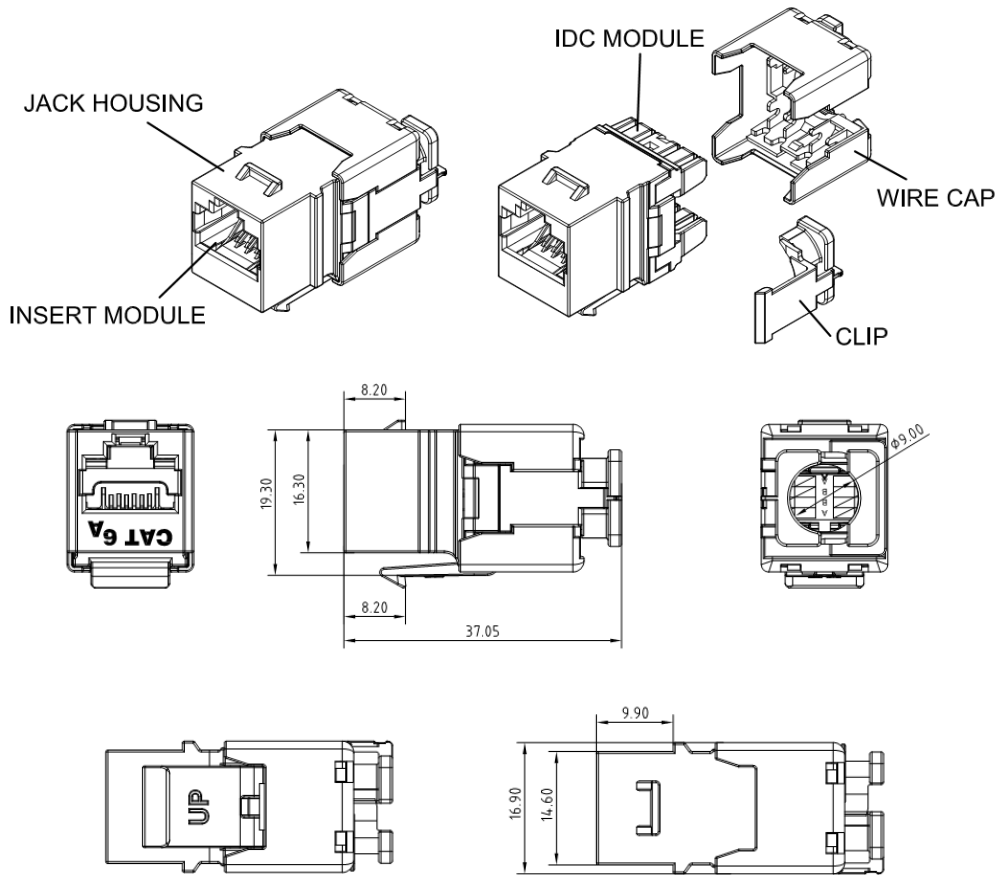
- Slim, Modular and Low Profile design allow high density application
- IDC is configured at 180° to Jack to allow easy rear termination and allow quick termination by Quick Crimp tool.
- Support both T568A and T568B wiring
- Support 10Base-T to 10GBase-T Ethernet application

Characteristics

- Insulation Resistance: 500 m-Ω @ 100V DC
- Dielectric Withstand Voltage: 1000 V AC/DC
- Peak to Peak : 60 Hz 1 min
- Housing: PC UL94V-0 (High Impact, Fire retardant plastic) enclosed by Zinc-Alloy housing
- Contact: Phosphor Bronze Alloy plated with 50 micron gold
- 750 Cycles (min) Insertion and Extraction life
- IDC: Phosphor Bronze Alloy with 100 micron Sn Alloy
- Accept 22-24 AWG Solid Wire



Part Drawing



| Part Number # | Description |
|-----------------|--|
| 302-2QX6AF-18AB | Cat 6A Shielded 180° Quick Crimp Keystone Jack |
| 302-1005W2-F103 | 8 Position Quick Crimp Tool (for QX series modular jack) |